

LARGE ALUMINUM ELECTROLYTIC CAPACITORS

GM Screw Terminal Type, High Ripple Series

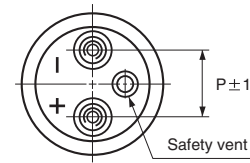
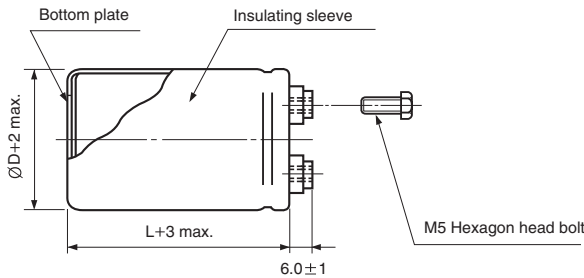
- Ideally suited for use as input and output filter capacitors in power supplies
- High ripple current compared with GT series
- Suited for smoothing circuits for general purpose inverters, control circuits for F.A. machines and medical equipment
- Designed for use as input filter capacitor for current U.P.S.
- Complied to the RoHS directive



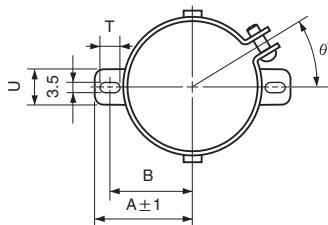
Item	Characteristics	
Operating temperature range	-25 ~ +85°C	
Capacitance tolerance	±20% at 120Hz, 20°C	
Leakage current max.	$I=3\sqrt{CV}$ (μA) (after 5 minutes)	
Dissipation factor max.	0.25 max. at 120Hz, 20°C	
Load life (after application of the rated voltage for 2000 hours at 85°C)	Leakage current	Less than specified value
	Capacitance change	Within ±20% of initial value
	tanδ	Less than 300% of specified value
Shelf life (at 85°C)	After 1000 hours no load test, leakage current, capacitance and tanδ are same as load life value. The measurement shall be performed at 20°C by the KS C IEC 60384 - 4	

● DRAWING

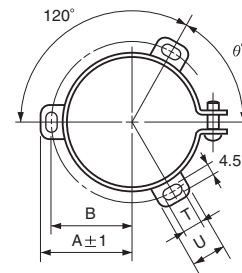
Unit : mm



● TWO LEGS ANGLE



● THREE LEGS ANGLE



● TWO LEGS ANGLE SIZE TABLE

ØD	B	A	T	U	θ°	P
51	33.6	39.9	6	14	30	22
63.5	40.8	46.8	6	14	30	28.6

● THREE LEGS ANGLE SIZE TABLE

ØD	B	A	T	U	θ°	P
51	32.9	38.9	7	12	60	22
63.5	38.4	45.3	7	14	60	28.6
76.2	44.5	51.5	8	16	60	31.8
89	50.8	61	8	16	60	31.8

GM series

● DIMENSIONS & MAXIMUM PERMISSIBLE RIPPLE CURRENT

WV Item μF	350		400		450	
	ØD×L (mm)	Ripple current (A rms) 85°C 120Hz	ØD×L (mm)	Ripple current (A rms) 85°C 120Hz	ØD×L (mm)	Ripple current (A rms) 85°C 120Hz
820					51 × 80	4.8
1000			51 × 80	5.3	51 × 100	5.8
1200	51 × 80	5.8	51 × 80	5.8	51 × 100	6.3
1500	51 × 80	6.5	51 × 100	7.0	51 × 120	7.5
1800	51 × 100	7.7	51 × 120	8.3	51 × 140	8.2
2200	51 × 120	9.2	51 × 140	9.7	63.5 × 100	8.9
2700	51 × 140	10.9	63.5 × 100	10.0	63.5 × 120	10.4
3300	63.5 × 100	11.0	63.5 × 120	11.6	63.5 × 130	11.7
3900	63.5 × 120	13.0	63.5 × 130	13.2	76.2 × 120	13.4
4700	63.5 × 130	14.5	76.2 × 120	14.7	76.2 × 130	15.5
5600	76.2 × 120	15.5	76.2 × 130	16.1	76.2 × 160	17.2
6800	76.2 × 130	17.8	76.2 × 160	19.0	76.2 × 170	19.4
8200	76.2 × 160	21.1	76.2 × 170	21.4		
10000	76.2 × 170	23.8	89 × 160	25.0		

● FREQUENCY COEFFICIENT OF PERMISSIBLE RIPPLE CURRENT

WV Frequency	50Hz	120Hz	1kHz	3kHz
350 ~ 450	0.8	1.0	1.3	1.4