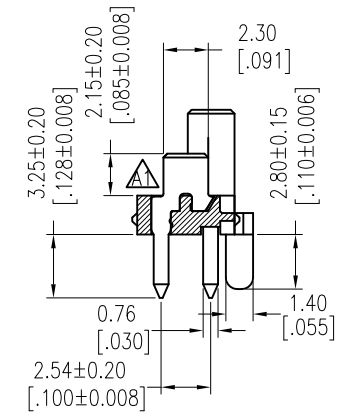
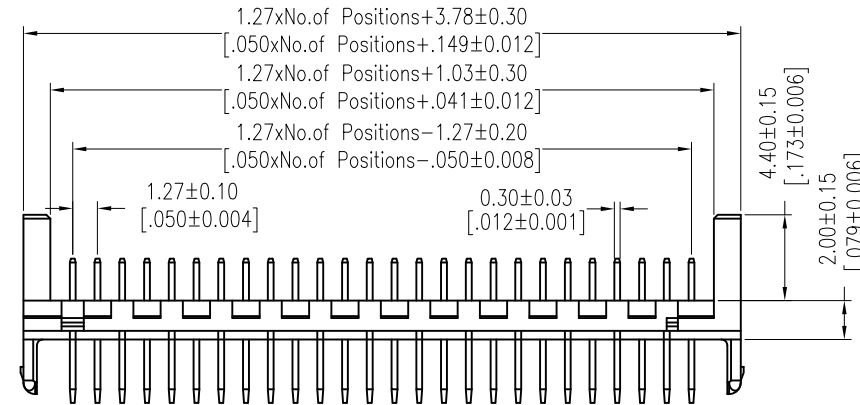
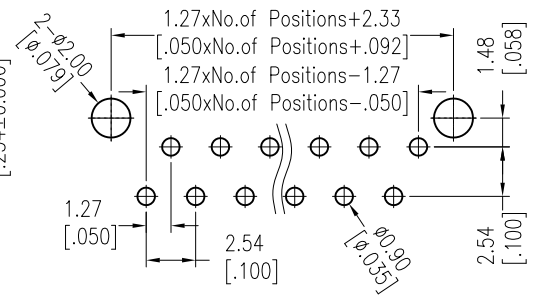
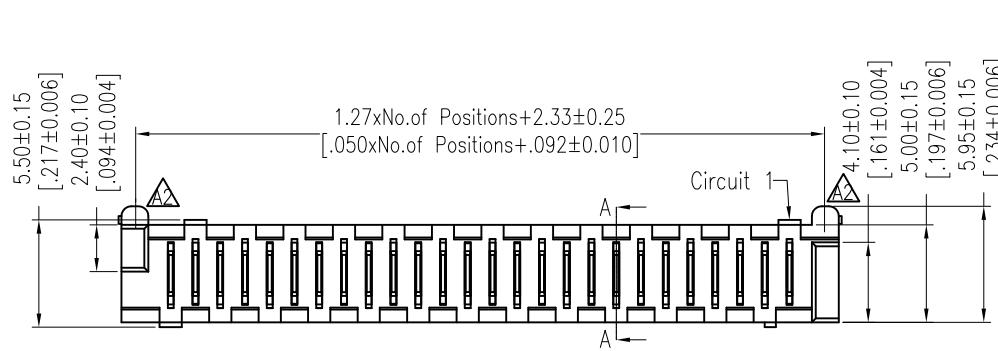


# HSF

NOTES:  
 Current Rating: 1.0AMP  $\Delta$   
 Contact Resistance: 20m $\Omega$  Max  
 Withstand Voltage: 500V AC/DC  
 Insulation Resistance: 1000M $\Omega$  Min  
 Operation Temperature: -40°C to +105°C

Contact Material: Phosphor Bronze  
 Contact plating: Sn over Ni  
 Insulator Material: LCP+30%G.F UL94V-0

Recommended P.C.B Layout (Top Side)  
 (PCB BOARD TOLERANCE  $\pm 0.05$ )



Section A-A

## Ordering Information

3901-XX MS XX D W B X 1

No. of Pins	Contact Plating	Insulator	Color	Packing
04 16	SM=Matte Tin	D=LCP	B=Black	T=Tube
06 18	SN=Tin			
08 20				
10 22				
12 24				
14 26				

REV	DATE	MODIFICATION DESCRIPTION	CHANGE	DIM	TOL	OPERATION	DRAW	DATE	SCALE	FIT	PART NO.
A3	2018/05/15	Picoflex Connector--1.27mm SPC Connector	$\Delta$			OPERATION	DRAW	2018/05/15	UNIT	mm	3901-XXMSXXDWBX1
A2	2013/12/26	Modify the drawing	$\Delta$	x.X	$\pm 0.40$		Ding		SIZE	A4	TITLE: $\Delta$
A1	2013/08/16	Modify the drawing	$\Delta$	x.XX	$\pm 0.25$		CHECK		SHEET	1/1	1.27mm SPC Connector 180° With Peg
A0	2012/11/01	NEW	-----	x.XXX	$\pm 0.15$		APPROVE		PROJ.	$\Phi$	Customer NO.
				Angle	$\pm 3'$						