

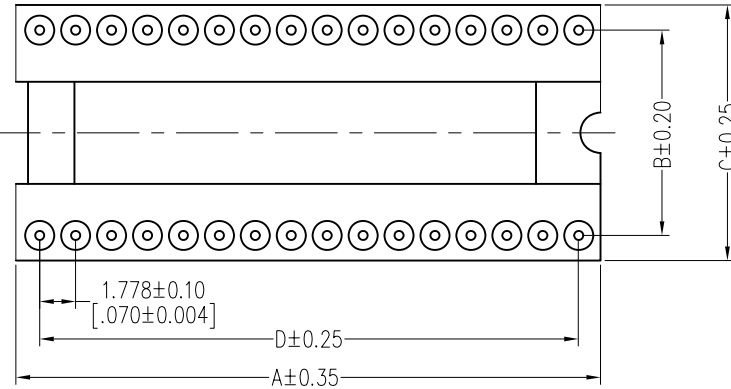
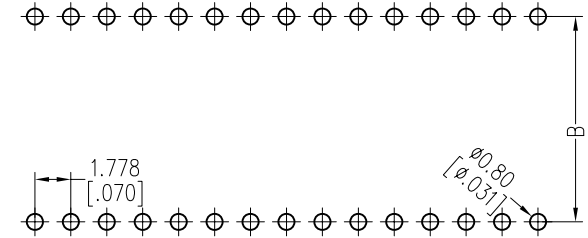
HSF

TECHNICAL SPECS:

Current Rating: 1.0AMP
 Contact Resistance: 10mΩ Max
 Dielectric Strength: Min 1000V_{RMS}
 Mechanical Life: Min 100 cycles
 Connecting Pin: Ø0.47mm
 Operation Temperature: -40°C to +105°C

Sleeve: Brass CuZn36Pb3(C36000)
 Contact plating: Au Or Sn over Ni
 Insulator Material: PPS+30%G.F(UL94V-0)

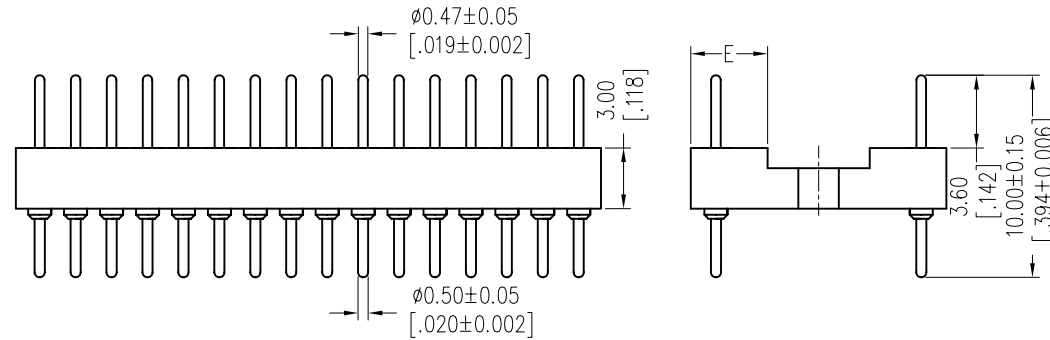
Recommended P.C.B Layout(Top Side)
 (PCB BOARD TOLERANCE±0.05)



Ordering Information

3561-30X XX S XX 100 X 1

Row of Pitch	No. of Pin	Contact Plating	Packing
2=15.24mm	See tab	G0=Gold Flash	T=Tube
3=10.16mm		G3=10u"Gold	
4=19.05mm		G4=15u"Gold	
		G5=30u"Gold	



Dimensional & Ordering Information

NO. of Poles	Part No.	Dimension				
		A	B	C	D	E
24	3561-30324SXX100X1	21.80	10.16	12.70	19.558	3.1
28	3561-30328SXX100X1	25.20	10.16	12.70	23.114	3.1
30	3561-30330SXX100X1	27.00	10.16	12.70	24.892	3.1
32	3561-30332SXX100X1	28.80	10.16	12.70	26.670	3.1
48	3561-30348SXX100X1	43.10	10.16	12.70	40.894	3.1
20	3561-30220SXX100X1	18.10	15.24	17.78	16.002	3.1
24	3561-30224SXX100X1	21.70	15.24	17.78	19.558	3.1
28	3561-30228SXX100X1	25.20	15.24	17.78	23.114	3.1
40	3561-30240SXX100X1	35.80	15.24	17.78	33.782	3.1
42	3561-30242SXX100X1	37.70	15.24	17.78	35.560	3.1
48	3561-30248SXX100X1	43.10	15.24	17.78	40.894	3.1
52	3561-30252SXX100X1	46.70	15.24	17.78	44.450	3.1
56	3561-30256SXX100X1	50.20	15.24	17.78	48.006	3.1
64	3561-30264SXX100X1	57.30	15.24	17.78	55.118	3.1
68	3561-30268SXX100X1	60.90	15.24	17.78	58.674	3.1
64	3561-30464SXX100X1	57.30	19.05	21.54	55.118	3.8

REV	DATE	MODIFICATION DESCRIPTION	CHANGE	OPERATION	DRAW	DATE	SCALE	FIT	PART NO.
				x.x ±0.40	JYHuang	2012/11/01	UNIT	mm	SEE TAB
				x.xx ±0.25	CHECK	DATE	SIZE	A4	TITLE:
				x.xxx ±0.15	APPROVE	DATE	SHEET	1/1	1.778mm MACHINED ADAPTER CONNECTOR
				Angle ± 3'			PROJ.	Customer NO.	180° H=3.0 L=10.0
				DIM TOL					