

HSF

TECHNICAL SPECS:

Current Rating: 1.0AMP
 Contact Resistance: 10mΩ Max
 Dielectric Strength: Min 1000V_{RMS}
 Mechanical Life: Min 100 cycles
 Mating Pin: Ø0.40 to Ø0.56mm
 Forces: (polished steel gauge Ø0.43mm)
 Insertion: 200g Max/Pin, Withdrawal: 60g Min/Pin
 Operation Temperature: -40°C to +105°C

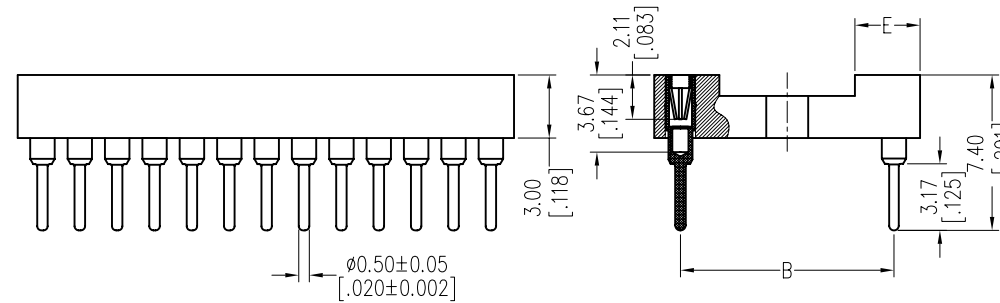
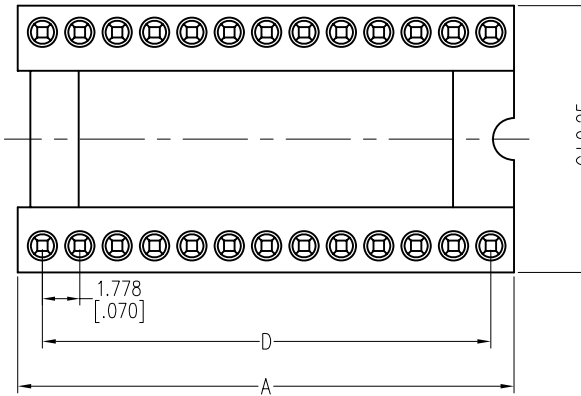
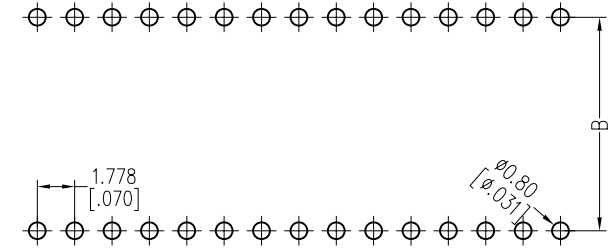
Sleeve: Brass CuZn36Pb3(C36000), Sn over Ni
 Contact Clip(4 finger): BeCu(C17200), Au or Sn over Ni
 Insulator Material: PPS+30%G.F(UL94V-0)

Ordering Information

7120-30X XX S XX 074 X 1

Row of Pitch	No. of Pin	Contact Plating	Packing
2=15.24mm	See tab	S0=Gold Flash/Tin	T=Tube
3=10.16mm		S3=10u"Gold/Tin	
4=19.05mm		S4=15u"Gold/Tin	
		S5=30u"Gold/Tin	
		SN=Tin	

Recommended P.C.B Layout(Top Side)
 (PCB BOARD TOLERANCE±0.05)



Dimensional & Ordering Information

NO.of Poles	Part No.	Dimension				
		A	B	C	D	E
24	7120-30324SXX074X1	21.80	10.16	12.70	19.558	3.1
28	7120-30328SXX074X1	25.20	10.16	12.70	23.114	3.1
30	7120-30330SXX074X1	27.00	10.16	12.70	24.892	3.1
32	7120-30332SXX074X1	28.80	10.16	12.70	26.670	3.1
48	7120-30348SXX074X1	43.10	10.16	12.70	40.894	3.1
20	7120-30220SXX074X1	18.10	15.24	17.78	16.002	3.1
24	7120-30224SXX074X1	21.70	15.24	17.78	19.558	3.1
28	7120-30228SXX074X1	25.20	15.24	17.78	23.114	3.1
40	7120-30240SXX074X1	35.80	15.24	17.78	33.782	3.1
42	7120-30242SXX074X1	37.70	15.24	17.78	35.560	3.1
48	7120-30248SXX074X1	43.10	15.24	17.78	40.894	3.1
52	7120-30252SXX074X1	46.70	15.24	17.78	44.450	3.1
56	7120-30256SXX074X1	50.20	15.24	17.78	48.006	3.1
64	7120-30264SXX074X1	57.30	15.24	17.78	55.118	3.1
68	7120-30268SXX074X1	60.90	15.24	17.78	58.674	3.1
64	7120-30464SXX074X1	57.30	19.05	21.54	55.118	3.8

				OPERATION	DRAW	DATE	SCALE	FIT	PART NO. SEE TAB	
				x.x ±0.40	JYHuang	2012/11/02	UNIT	mm	TITLE: 1.778mm IC SOCKET 180° H=3.0 L=7.4	
				x.xx ±0.25	CHECK	DATE	SIZE	A4		
				x.xxx ±0.15			SHEET	1/1	Customer NO.	
AO	2012/11/02	NEW	-----	Angle ± 3°	APPROVE	DATE	PROJ.	⊕		
REV	DATE	MODIFICATION DESCRIPTION	CHANGE	DIM TOL						