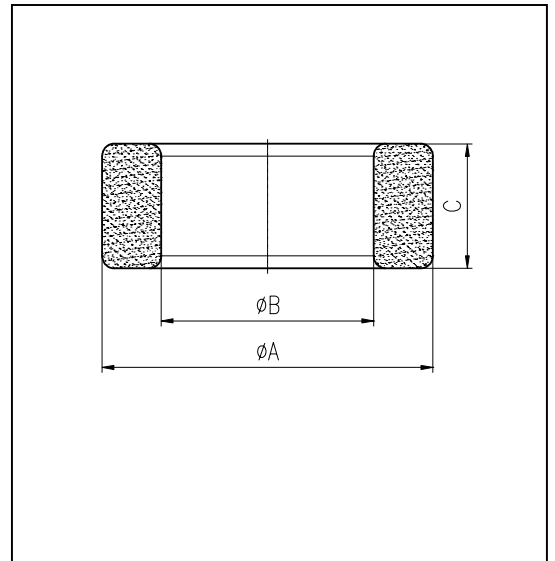


CORE SETS

Effective core parameters

SYMBOL	PARAMETER	VALUE	UNIT
$\Sigma (1/A)$	core factor (C_1)	0.95	mm^{-1}
V_e	effective volume	67032.00	mm^3
l_e	effective length	252.00	mm
A_e	effective area	266.00	mm^2
W_t	mass of core	≈ 337.9	g



尺寸	A	B	C
Coat			
Uncoat	101.0 ± 2.0	65.0 ± 1.5	15.0 ± 1.5
Coated	104.2max	62.5min	17.5max

Note: With grass green epoxy coating

Characteristic

GRADE	AL (nH/N^2)	B (mT)	CORE LOSS (W)
		$f=10\text{kHz}$ $U=0.25\text{V}$	$H=250\text{A/m}$ $f=25\text{kHz}$ $T=100^\circ\text{C}$
DMR40	$3040 \pm 25\%$	≥ 320	≤ 40.55

GRADE	AL (nH/N^2)	μ_i
		$f=10\text{kHz}$ $U=0.25\text{V}$
R5K	$6000 \pm 25\%$	≈ 5000
R7K	$7900 \pm 25\%$	≈ 7000
R10K	≥ 7500	≈ 10000
R12K	≥ 8200	≈ 12000